



Year 1 Autumn Term 1

Memory Box

Geography: Wonderful Weather



### Key Vocabulary

<b>Equator</b>	It is an imaginary line around the Earth that goes exactly midway between the <b>North and South Poles</b> and divides it into two equal halves, called hemispheres.
<b>North Pole and South Pole</b>	The <b>North Pole</b> is the furthest North you can go on earth. The <b>South Pole</b> is the furthest South you can go on earth.
<b>Season</b>	The seasons are Spring, Summer, Autumn and Winter. The weather is different during each season.
<b>Weather</b>	Weather is a description of the way the air and the atmosphere feels . <i>For example, it could be: hot, cold, wet, dry, windy or calm.</i>



This half term, our Big Question is...

**What is weather?**

### Key Facts

What kind of weather do we have in this country?	In the United Kingdom, we have four different <b>seasons</b> . These are: Spring—when the cold <b>weather</b> begins to get warmer. Summer—the driest and warmest <b>season</b> of the year. Autumn—when the warm <b>weather</b> gets colder. Winter—the coldest and darkest <b>season</b> .
Where might I find in a hotter country?	Hotter countries may be found nearer to the <b>equator</b> .
Where might I find in a colder country?	Colder countries may be found further away from the <b>equator</b> and closer to the poles.

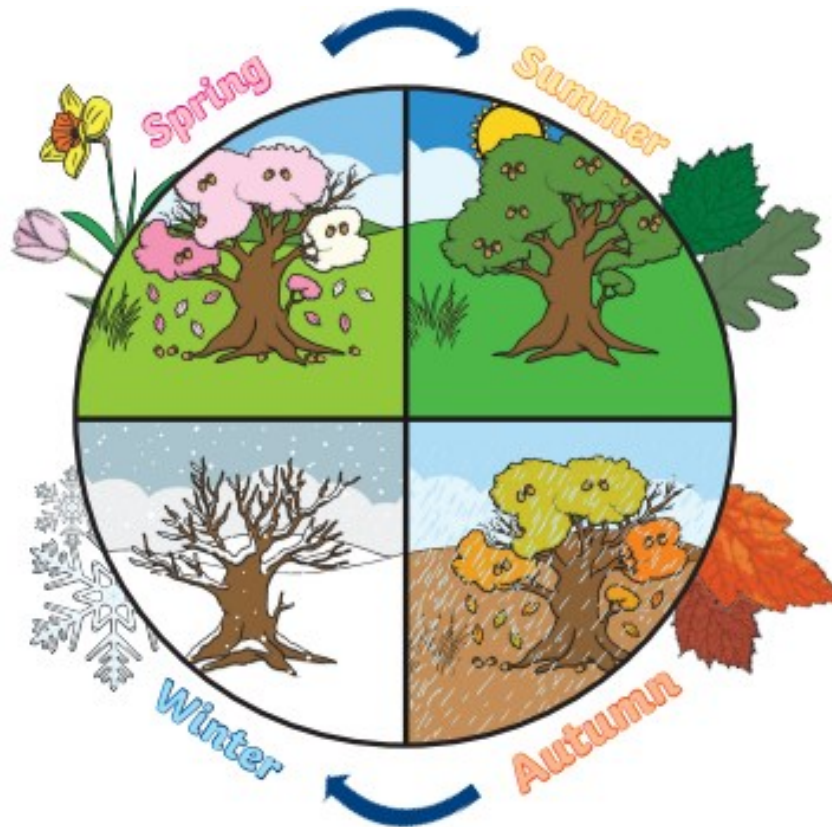
What do we already know?

In Reception...

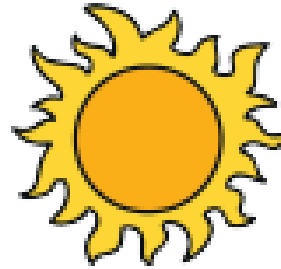
You learned that life was different in different places.

You found geographical similarities and differences between different places using photographs and images

You described and drew pictures of the natural world



Sunny



Cloudy



Rainy



Showery



Stormy



Snowy

